

Solid Edge Web Publisher

Benefits

- Share design information over the internet
- Communicate detailed product design with bill of materials (BOMs), exploded views, 3D models and file properties
- Share design information to shop floor, customers and suppliers
- Build collaborative online sales configurations

Features

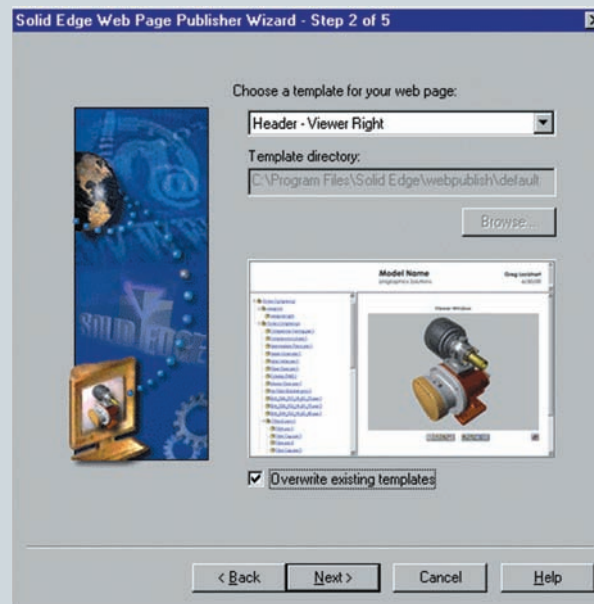
- Use wizard to simplify web publishing
- Create lightweight 3D models
- View models with standard web browser

Summary

Solid Edge® Web Publisher software makes it extremely fast and easy to share design information over the internet or company intranets. Web Publisher is seamlessly integrated with Solid Edge, so you can publish web pages with Solid Edge 3D models and related data in seconds, directly from your Solid Edge design session, without any web publishing expertise.

Sharing CAD designs over the internet

Solid Edge Web Publisher provides a quick and simple method for sharing design information over the internet. Web Publisher enables engineers to publish web pages with 3D models and related data directly from Solid Edge design sessions. Using industry-leading technology developed by Immersive Design, Inc., Web Publisher facilitates access to design engineering data



Solid Edge Web Publisher provides a fast and simple wizard interface for publishing design data.

SOLID EDGE

www.siemens.com/solidedge

ACUITY
Your engineering technology partner

SIEMENS

Solid Edge Web Publisher

System requirements

Solid Edge Web Publisher is delivered with Solid Edge and shares Solid Edge system requirements.

Minimum system configuration

- Intel Pentium or AMD Athlon processor-based PC
- Windows XP, Windows NT 4.0 Service Pack 6 or later, Windows 2000, 128 MB RAM
- 500 MB of disk space for installation
- Minimum resolution: 1,024 x 768, 65K colors
- CD-ROM (local or network) for installation

Recommended system configuration

- Windows 2000, Pentium III or Pentium 4 or AMD Athlon, 512 MB or more RAM, OpenGL

throughout the manufacturing enterprise, and among customers and suppliers.

Wizard simplifies publishing

Designers simply select the Web Publisher icon within the Solid Edge modeling window to start publishing design data. A wizard interface provides a step-by-step guide. The user can select from several predefined web page templates, previewed within the wizard, to format web pages. In addition, companies can develop custom templates for publishing design data.

Lightweight 3D models

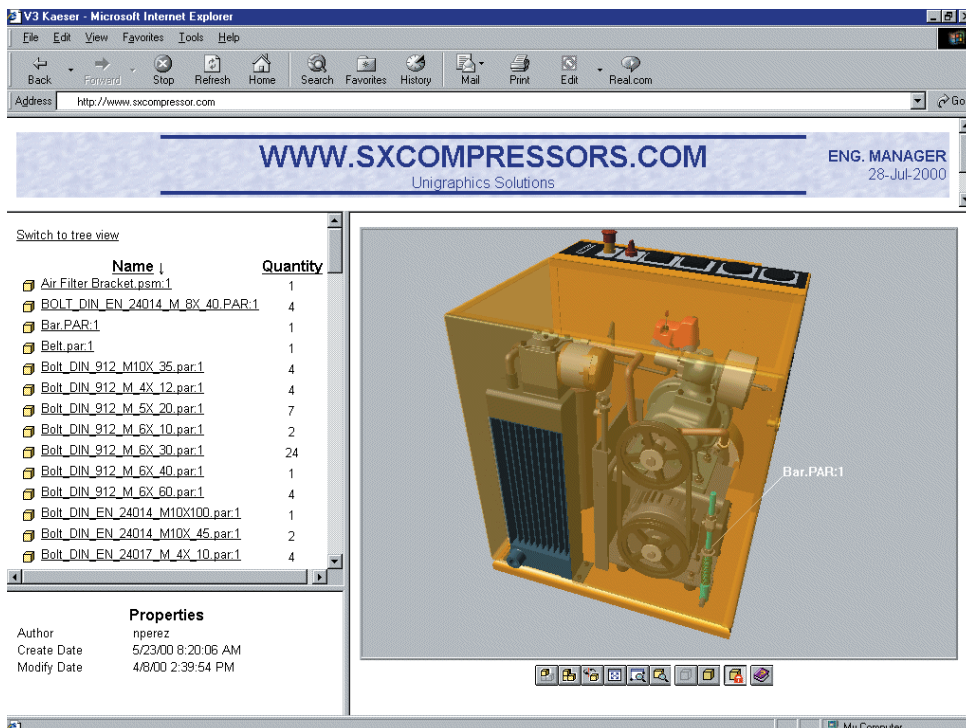
Solid Edge Web Publisher uses a lightweight 3D model format that reduces browser display times and enhances design communication. More than pictorial representations, Web Publisher 3D models offer the advantage of 3D visualization, with view manipulation of volumetric models. The lightweight format offers faster access and viewing than with native-format CAD models.

View with standard web browser

Solid Edge Web Publisher makes part and assembly models accessible with the standard Microsoft Internet Explorer web browser, so design information can be easily distributed to anyone who needs it, including non-engineering users throughout the enterprise, shop floor personnel, customers and suppliers. Viewing Solid Edge design data just requires a free viewer, IPA Web View, which downloads automatically from the Immersive Design website when viewers first access published Solid Edge designs.

Communicating product designs

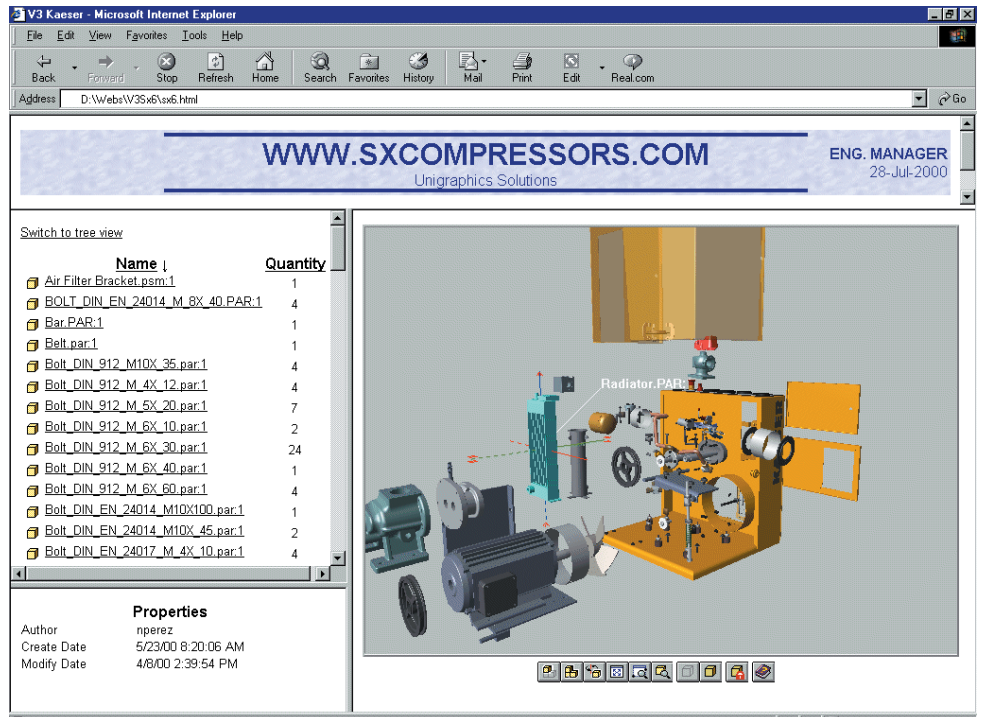
Solid Edge Web Publisher enables anyone with access to the web server to view 3D models, product structure, BOMs and design file properties. The interactive viewing window provides both a product tree view and a BOM view that efficiently communicate the assembly structure, including file names, descriptions and part counts. Viewers can also highlight and label components in the 3D model browser window. Web Publisher can be extended with Visual Basic programming to build online sales configuration and other collaborative commerce applications.



Solid Edge Web Publisher provides a fast and simple wizard interface for publishing design data.

3D viewing enhances communication

Interactive controls in the 3D model window enable users to view and manipulate the display to better understand the design. To aid in viewing internal components, the user can selectively hide or show each part, and zoom or fit the window to examine design details. Full 3D rotation enables viewing of the model from any angle. For further insight into the design, viewers of Solid Edge Web Publisher pages can reposition assembly components to create exploded views and better see internal part details.



Viewers of published models can reposition components to create exploded views and examine internal details.

ACUITY
 Your engineering technology partner

www.acuityinc.com ■ info@acuityinc.com

Main Office: 7320 SW Hunziker Street, Suite 205 Tigard, OR 97223

Toll-free: 888.747.0850 ■ Direct: 503.747.0850 ■ Fax: 503.747.4269

© 2010 Siemens Product Lifecycle Management Software Inc. All rights reserved. Siemens and the Siemens logo are registered trademarks of Siemens AG. D-Cubed, Femap, Geolus, GO PLM, I-deas, Insight, Jack, JT, NX, Parasolid, Solid Edge, Teamcenter, Tecnomatix and Velocity Series are trademarks or registered trademarks of Siemens Product Lifecycle Management Software Inc. or its subsidiaries in the United States and in other countries. All other logos, trademarks, registered trademarks or service marks used herein are the property of their respective holders.
 X5 2199 12/10 C