

# Solid Edge Wire Harness Design

A dedicated process-driven environment for creating and routing wires and cables

## Benefits

- Reduce product costs through improved communication
- Reduce the need for costly physical prototypes
- Make faster and more informed design decisions
- Improve service and maintenance documentation
- Reduce overall time-to-market

## Features

Automatic wire harness tools

- Wire device and terminal assignment
  - Rats nest created from a net list (wire harness)
  - Wire harness output to manufacturing
  - Wire harness reports
- Harness creation tools
- Wires, cables and bundles

## Summary

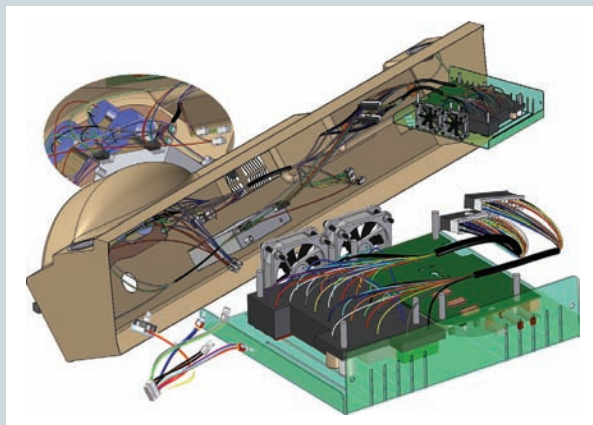
Solid Edge® Wire Harness Design software utilizes electrical circuit diagrams from popular eCAD systems to automate the creation of routed wiring and cable harnesses. Electrical and mechanical design teams can now collaborate more closely and create a complete digital mockup that includes cables and wires. Dedicated tools deliver streamlined ways to create wires, cables and bundles. Correct cut-length information is easily accessible for manufacturing.

## Seamless collaboration

Solid Edge Wire Harness Design is a dedicated process-driven environment for the efficient creation, routing and organization of wires, cables and bundles in a Solid Edge assembly. Wire Harness Design allows electrical and mechanical design teams to collaborate on designs to create complete and accurate digital mockups

containing both mechanical and electrical components; it removes the need for expensive physical prototypes. Design violations, such as excessive physical bundle size or a too tightly routed bend radius, are constantly monitored as the harness is being

designed; live feedback immediately displays any problems. Reporting of cable and wire cut length and attributes (allowing for a slack percentage and wire stripping) are captured during the harness design process. The export of ready-to-use "net list" files adds these mechanical attributes to produce harness designs that are ready for manufacturing.



## Automatic wire harness design

Once electrical engineers have developed and proven their designs using electrical prototypes (a task becoming increasingly important as the size and complexity of electrical systems increase), mechanical engineers can use the

## VELOCITY SERIES

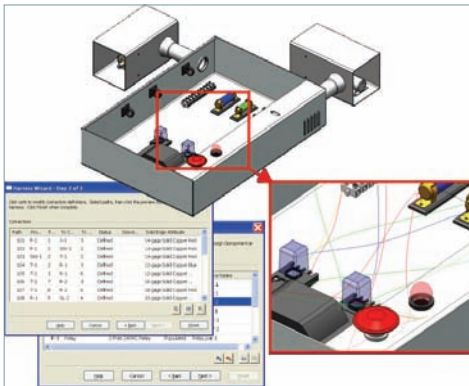
[www.siemens.com/velocity](http://www.siemens.com/velocity)

**ACUITY**  
Your engineering technology partner

**SIEMENS**

## Solid Edge Wire Harness Design

harness wizard to automatically generate and route physical wires and cables. The harness wizard uses input from dedicated electrical schematics applications, such as Cimteam and Vesys, to automatically transfer any net-list components and connections to Solid Edge. Using the wizard, engineers can quickly establish a “rats nest” of wires from a predefined connector on one component to a corresponding connector on another.



### Flexible routing tools

Companies without a dedicated eCAD system can still enjoy the benefits of Solid Edge Wire Harness Design. Efficient creation and editing tools are used to ensure the best routing for cables and establish correct cable lengths. With the “create wire” command, both path and wire attributes are created in the same process. Solid Edge Wire Harness Design uses “smart” path technology to create wires in free space, quickly routing them around a design and accurately threading them through other components such as clips or trucking (conduit). Single wires can be collected together to form a cable. Cables and wires can be bundled together

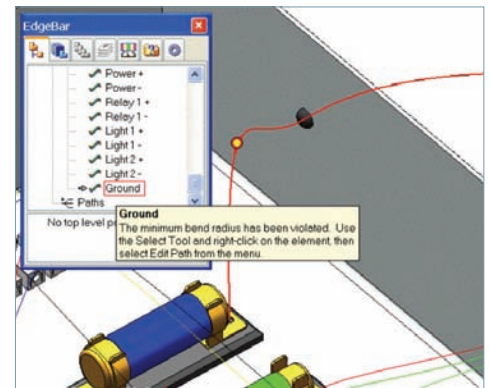
to form the harness, ensuring the correct wire length and checking for design violations.

### Live feedback of design violations

Individual wires can be grouped into cables and wires and cables grouped into bundles to neatly route them within a design. Built-in design-error checkers provide persistent live feedback, warning of design violations, such as minimum bend radius violations or instances where the bundle size of cables and wires exceed the maximum. Violations are relayed to the user by showing a graphical symbol next to the wire in EdgeBar; highlighting the wire. A tool tip offers advice on how to fix the problem. Any design violations are easy to fix, components can be easily repositioned and wire paths can be adjusted easily using keypoint curves and blue dots as required.

### Auto placement and terminal assignment

When using the harness wizard with a predefined net-list file, electrical components and connection information is automatically assigned to preconfigured Solid Edge parts. If no mechanical parts are present in Solid Edge, the components can be selected and will be automatically placed using a predefined grid. Wires are automatically connected. Components can be easily positioned using Solid Edge assembly tools. All wires remain connected to their original components, and wire length is updated in any manufacturing reports. For electrical components that have not had terminals assigned or connection information attributed, users can assign this information “on the fly” while the harness is created, allowing customers to capture knowledge while



they build their component libraries. Once electrical components have been assigned, the information is stored for future designs.

### Realistic wire representation for complete digital mockups

Wires created with Solid Edge Wire Harness Design contain all of the information required for manufacturing; they do not require a 3D representation for the wire design. This approach speeds the initial design and editing of the wire harness. However, for a more realistic 3D mechanical view, or if a detailed drawing is required, designers can generate an associative 3D model of the wires, including individual wires, cables and bundles with colors. Automatic tangency of wire paths from terminals and through wire clips ensures that wires look natural as they are routed.

### Output to manufacturing

To build a nail board, mechanical properties not present in the electrical wire design and circuit simulation package, such as wire length, can be fed back to the eCAD system with additional information captured in Solid Edge.

**ACUITY**  
Your engineering technology partner

www.acuityinc.com ■ info@acuityinc.com

Main Office: 7320 SW Hunziker Street, Suite 205 Tigard, OR 97223

Toll-free: 888.747.0850 ■ Direct: 503.747.0850 ■ Fax: 503.747.4269

© 2010 Siemens Product Lifecycle Management Software Inc. All rights reserved. Siemens and the Siemens logo are registered trademarks of Siemens AG. D-Cubed, Femap, Geolus, GO PLM, I-deas, Insight, Jack, JT, NX, Parasolid, Solid Edge, Teamcenter, Tecnomatix and Velocity Series are trademarks or registered trademarks of Siemens Product Lifecycle Management Software Inc. or its subsidiaries in the United States and in other countries. All other logos, trademarks, registered trademarks or service marks used herein are the property of their respective holders.  
X6 6091 9/10 C